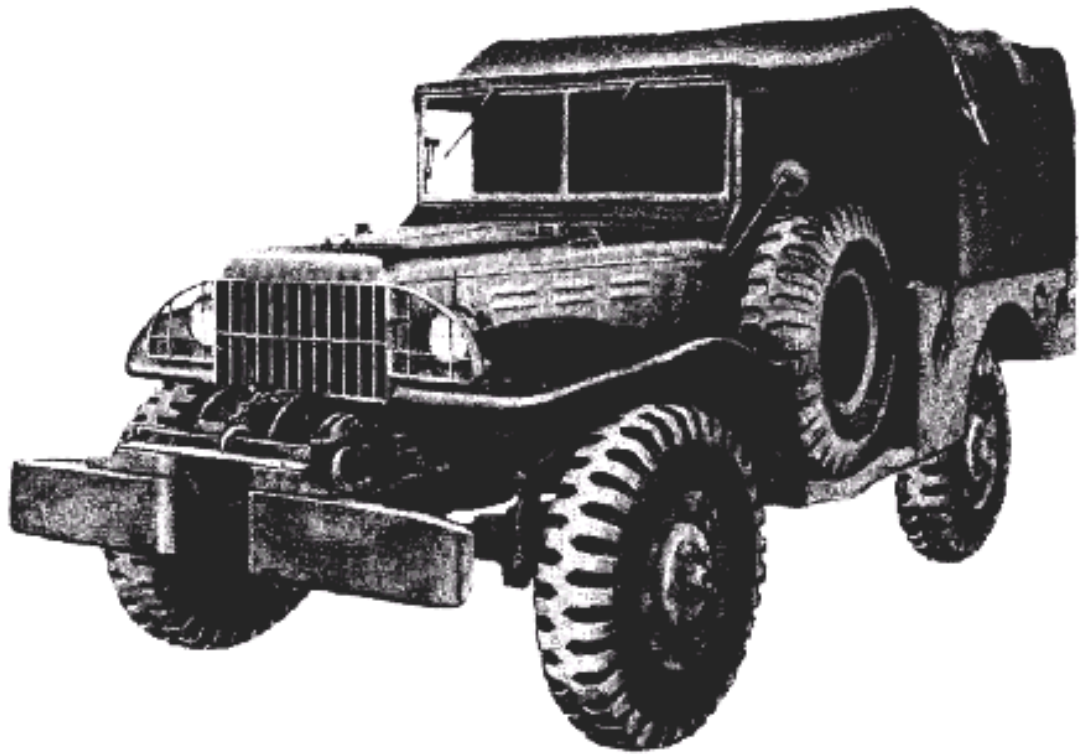


**STANDARD MILITARY MOTOR VEHICLES**  
**TRUCK, WEAPONS CARRIER, ¾-TON, 4 x 4**

Technical Manuals: TM 9-808, TM 9-1808A, Parts List: SNL G-502  
TM 9-1808B.

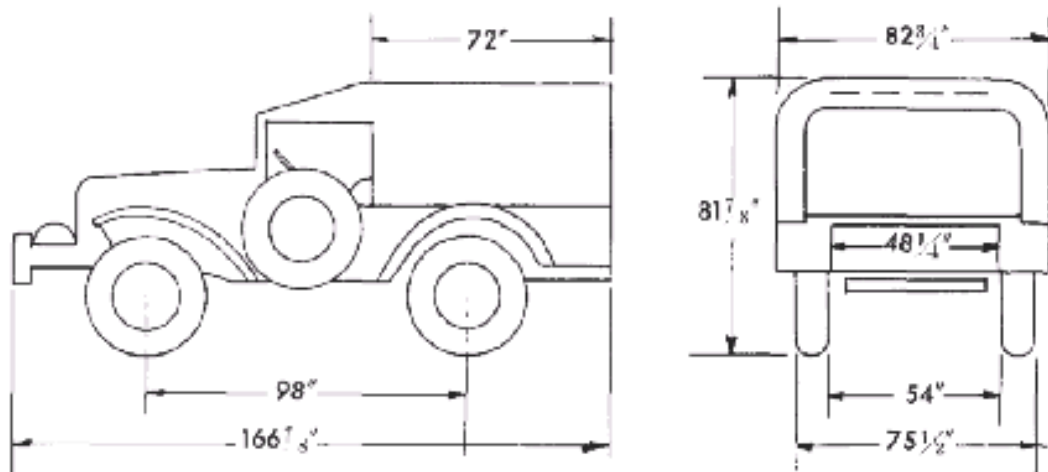
Manufacturer: Dodge Brothers Corp. (Div. of Chrysler Corp.)



RA PD 66555

Classification: Standard

Purpose: To transport weapons, tools and equipment.



# TRUCK, WEAPONS CARRIER, ¾-TON, 4 x 4

## GENERAL DATA

Crew	.....	2
Weight	Net	(lb) 5,250*
	Payload	(lb) 1,500*
	Gross	(lb) 6,750*
Shipping dimensions	(cu ft) 529.....(sq ft) 102	
Tires	Ply ... 8.....Size ... 9.00 x 16	
Tread, center to center	.....(in.)	64 <sup>3</sup> / <sub>4</sub>
Ground clearance	.....(in.)	10 <sup>5</sup> / <sub>8</sub>
Electrical system	.....(volts)	6
Capacities	Fuel, 70 octane gasoline	(gal) 30
	Cooling system	(qt) 18
	Crankcase (refill)	(qt) 5
Brakes	.....Hydraulic	

## PERFORMANCE

Maximum gradability	.....(percent)	60
Turning radius	.....(ft)	22
Fording depth	.....(in.)	34
Angle of approach (deg)	... With winch 36... Without winch 53	
Angle of departure	.....(deg)	31
Fuel consumption, average conditions	.....(miles per gal)	8
Cruising range, average conditions	.....(miles)	240
Maximum allowable speed	.....(mph)	54
Number of speeds forward	.....	4

## ENGINE

Manufacturer	.....Dodge.....Model T-214	
Type	.....In-line, 4 cycle.....Number of cylinders	6
Displacement	.....(cu in.)	230.2
Governed speed	.....(rpm)	3,200
Brake horsepower	.....	76
Ignition type	.....Battery	

## ADDITIONAL DATA

Winch capacity	.....(lb)	5,000
----------------	-----------	-------

\*Figures given are for vehicles without winch. For vehicles with winch use the following data:

Weight (lb)	... Net 5,550 ... Payload 1,500 ... Gross 7,050
-------------	---